

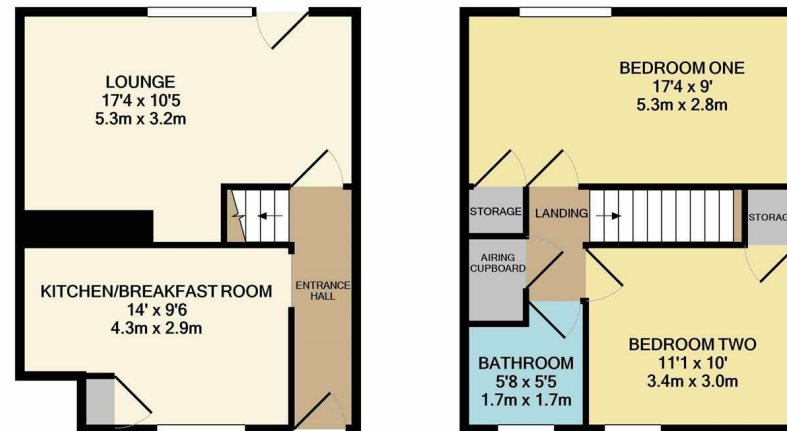
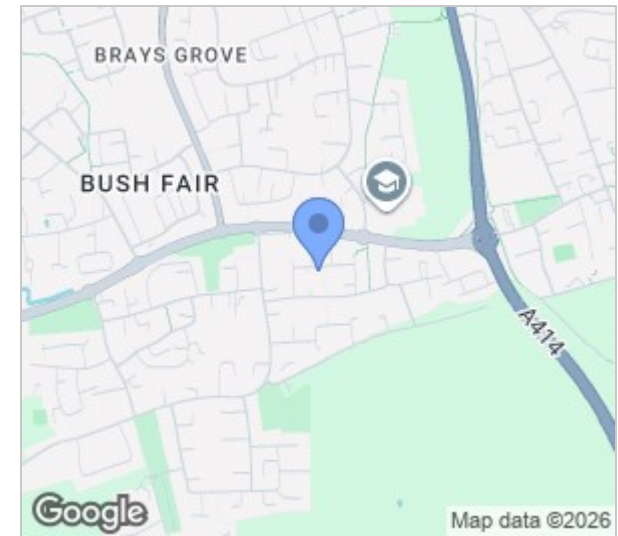


Spinning Wheel Mead, Harlow, CM18 7AQ  
£1,400 Per Month

2 1 1 E

# Spinning Wheel Mead, Harlow, CM18 7AQ

Available at the Mid May on an unfurnished basis is this two bedroom terraced home located close to shops and schooling. The property has an entrance hall, kitchen/breakfast room which has a range of fitted wall & base units and a lounge which overlooks the south facing rear garden. The first floor has two double bedrooms and a family bathroom.



GROUND FLOOR  
APPROX. FLOOR  
AREA 353 SQ.FT.  
(32.8 SQ.M.)

1ST FLOOR  
APPROX. FLOOR  
AREA 374 SQ.FT.  
(34.8 SQ.M.)

REYLANDJOHNSON/SWM  
TOTAL APPROX. FLOOR AREA 727 SQ.FT. (67.6 SQ.M.)

Whilst every attempt has been made to ensure the accuracy of the floor plan contained here, measurements of doors, windows, rooms and any other items are approximate and no responsibility is taken for any error, omission, or mis-statement. This plan is for illustrative purposes only and should be used as such by any prospective purchaser. The services, systems and appliances shown have not been tested and no guarantee as to their operability or efficiency can be given  
Made with Metropix ©2021



Energy Efficiency Rating		
	Current	Potential
Very energy efficient - lower running costs		
(92 plus) <b>A</b>		
(81-91) <b>B</b>		
(69-80) <b>C</b>		
(55-68) <b>D</b>		
(39-54) <b>E</b>		
(21-38) <b>F</b>		
(1-20) <b>G</b>		
Not energy efficient - higher running costs		
		<b>86</b>
		<b>54</b>
England & Wales	EU Directive 2002/91/EC	

Environmental Impact (CO <sub>2</sub> ) Rating		
	Current	Potential
Very environmentally friendly - lower CO <sub>2</sub> emissions		
(92 plus) <b>A</b>		
(81-91) <b>B</b>		
(69-80) <b>C</b>		
(55-68) <b>D</b>		
(39-54) <b>E</b>		
(21-38) <b>F</b>		
(1-20) <b>G</b>		
Not environmentally friendly - higher CO <sub>2</sub> emissions		
England & Wales	EU Directive 2002/91/EC	

These particulars, whilst believed to be accurate are set out as a general outline only for guidance and do not constitute any part of an offer or contract. Intending purchasers should not rely on them as statements of representation of fact, but must satisfy themselves by inspection or otherwise as to their accuracy. No person in this firm's employment has the authority to make or give any representation or warranty in respect of the property.

T. 01279 216216 E. info@rjestateagents.co.uk

1 Acorn Mews, Harlow, Essex, CM18 6NA www.rjestateagents.co.uk